

**PANOLA ROAD CORRIDOR IMPROVEMENTS**  
PUBLIC INFORMATION OPEN HOUSE DISPLAY  
- PRELIMINARY -



JUNE 13, 2013



- LEGEND**
- LIMIT OF RIGHT OF WAY
  - - - EXIST ROADWAY RIGHT OF WAY
  - ENVIRONMENTAL SENSITIVE AREA (ESA)
  - LIMIT OF PROPOSED ROADWAY
  - BUSINESS OR RESIDENTIAL DISPLACEMENT

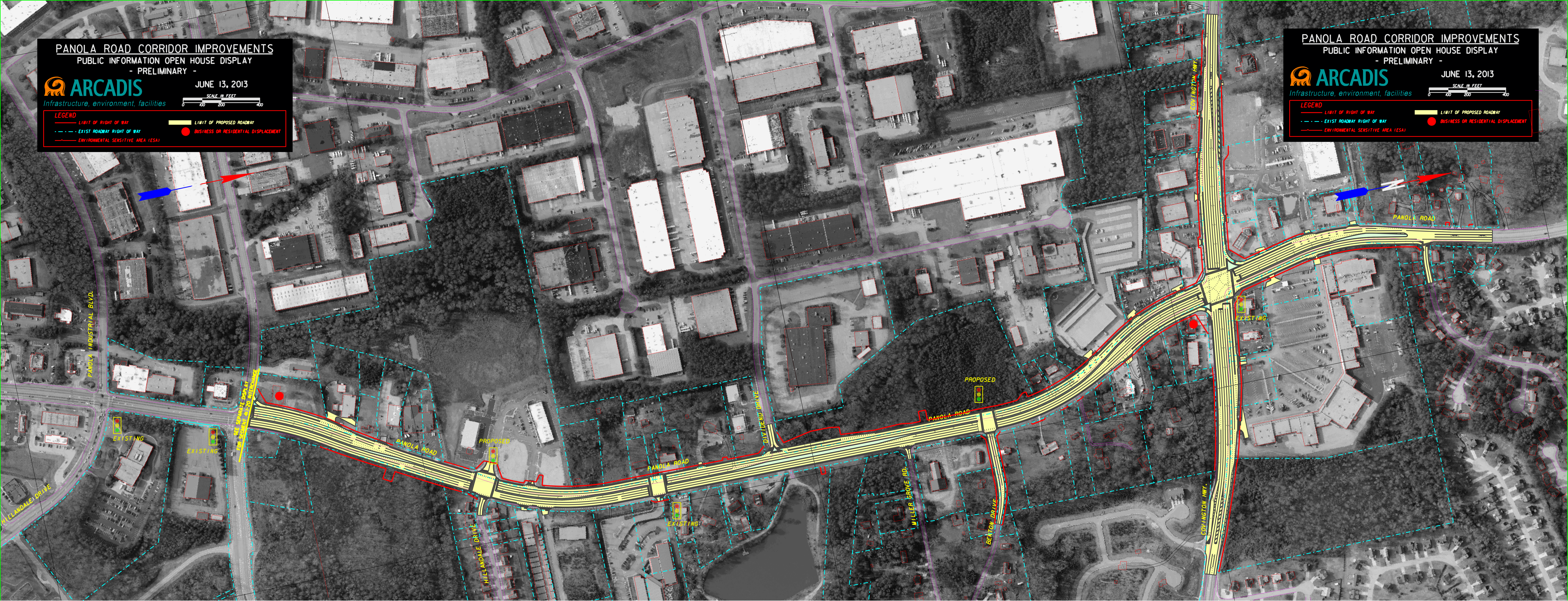
**PANOLA ROAD CORRIDOR IMPROVEMENTS**  
PUBLIC INFORMATION OPEN HOUSE DISPLAY  
- PRELIMINARY -



JUNE 13, 2013



- LEGEND**
- LIMIT OF RIGHT OF WAY
  - - - EXIST ROADWAY RIGHT OF WAY
  - ENVIRONMENTAL SENSITIVE AREA (ESA)
  - LIMIT OF PROPOSED ROADWAY
  - BUSINESS OR RESIDENTIAL DISPLACEMENT



SEGMENT 4 - NHS00-0002-00(868)  
I-20 INTERCHANGE  
SEE SEPARATE DISPLAY

3 LANES EACH DIRECTION  
VARIABLE WIDTH MEDIAN

SEGMENT 5 - STP-0006-00(890)  
SNAPFINGER WOODS DRIVE TO COVINGTON HIGHWAY (SR 12)

3 LANES EACH DIRECTION  
20' RAISED MEDIAN

3 LANES EACH DIRECTION  
32' RAISED MEDIAN

TRANSITION  
6 LANES TO 4 LANES  
TRANSITION  
32' TO 14' MEDIAN